

ORCAS POWER & LIGHT COOPERATIVE

Facility Installation Specifications Steps for a Successful Electrical Installation



No one likes to read instructions, but there is no faster or more cost effective way to get your service installed than by reading and following the policies and procedures outlined in this document. Any deviation from these policies and procedures will cost you time and money.

Reference documents: Articles of Incorporation, Bylaws, Member Service Policies and Tariffs. These documents can be found on OPALCO's website at www.opalco.com or requested by calling OPALCO's Member Service Department at 360-376-3500.

OPALCO Addresses:

183 Mt. Baker Rd	1034 Guard Street	4232 Center Road
Eastsound WA 98245	Friday Harbor WA 98250	Lopez Island, WA 98261
360-376-3510	360-376-3556	360-376-3544
fax 360-376-3505	fax 360-376-3548	fax 360-468-2470

Revision Date: 06/22/10

TABLE OF CONTENTS

Introduction and Notes.....	3
Right to Refuse Service	4
Seven Steps for a Successful Installation.....	4
Call Before You Dig.....	9

OPALCO/Member Provided Facilities and Responsibilities

- Equipment Ownership and Requirements	10
- Contribution in Aid of Construction.....	10
- Easements	11
- Allowance for Multiple Use by Others.....	12
- Fairshare Policy	13
- Line Retention Policy	13
- Protective Equipment.....	14
- Three-Phase Service.....	14
- Single-Phase Service.....	14
- Addition to Single-Phase Load	15
- Addition to Three-Phase Load	15
- Conversion of Single to Three-Phase Service	16
- Power Quality or Suspect Services.....	16
- Changes to OPALCO's System	16
- Undesirable Service Characteristics	17
- Cause for Disconnection	18
- Energy Efficiency	20
- Go Electric!.....	20
- Go Green!	20
- Interconnection with Member Owned Generation Equipment	20
Project PAL	21

OPALCO Facility Installation Specifications

- Electric Service Requirements21
- Member-Provided Equipment.....22
- Installation -and Access23
- OPALCO Connections.....23
- Location23
- Changes in Location or Size of Service Equipment ..24
- Member initiated Conversions.....24
- Installation Sites.....24
- Trench and Cable Installation Specifications26
- Clearances/Landscaping27
- Conduit.....31
- Member Installed Conduit System.....32
- Meter & Meterbase Specifications.....32
- For Rural Residential and Large Lot Subdivisions....34
- For Small Lot Subdivisions and Service to
Mobile or Manufactured Homes in
Multi-Occupant/Commercial Buildings.....35
- Multiple Metering Services (Ganged meterbases).....35
- Connecting From an OPALCO Pole
Mounted Transformer36
- Connecting From an OPALCO Pad
Mounted Transformer38
- OPALCO Approved Meterbases40
- CT Meterbases42
- OPALCO Directory and Areas43

“The owner or owner’s agent, or the electrical contractor making the installation must consult the serving utility regarding the Utilities service entrance requirements for equipment location and meter equipment requirements before installing the service and equipment. Provisions for a meter and related equipment, and attachment of a service drop, or an underground service lateral must be made at a location acceptable to the serving utility.”

INTRODUCTION AND NOTES

OPALCO is a member owned, non-profit, electrical cooperative that is governed by a Board of Directors elected by the membership. In an effort to treat all members equally, the Board has elected to require members and entities to agree to abide by the provisions of OPALCO's Articles of Incorporation, By-Laws, Member Services Policies, Tariffs and Membership Application as a prerequisite for Membership. These documents can be found on OPALCO's web site (www.opalco.com), or requested by contacting OPALCO's Member Services Department.

Failure to comply with these provisions may result in loss of membership. Members who elect not to comply with all provision in the above mentioned documents will be notified of the violation and required action in writing. Members shall be given 120 days to comply with membership obligations. After the expiration of this period, OPALCO shall deem failure to comply with the required provisions as a surrender and forfeiture of membership. OPALCO shall remove all meters connected in the former member's name.

Installing a new electric service is a joint project between a member and the Cooperative. This publication, along with the guidance of OPALCO staff, is designed to provide you with the information needed for the successful installation of a new service or modification of an existing service. Please take the time to read this pamphlet and familiarize yourself with the procedures outlined herein. If you need assistance, please contact the OPALCO Engineering Department for your area.

OPALCO will not energize a service unless all requirements as stated herein have been met. Members are also required to meet all state and local regulations in addition to OPALCO Member Services Policies.

Right to Refuse Service

OPALCO is an Electrical Cooperative made up of individual members who have entered into a contractual agreement with each other to share in the benefits of electricity. This benefit is available to all responsible parties who agree to be governed by the same contractual obligations. OPALCO may refuse to provide service to any responsible party who refuses to comply with OPALCO's Articles of Incorporation, By-Laws, Member Services Policies and membership application. This right to refuse service does not limit OPALCO's authority to refuse service under other conditions.

SEVEN STEPS FOR A SUCCESSFUL ELECTRICAL INSTALLATION

The following steps must be completed in the order in which they appear:

1. JOINING THE OPALCO COOPERATIVE

Those wishing service must be a member of the OPALCO and have a current membership on file at OPALCO. First-time applicants must fill out an Application for Member-

A \$5 membership fee is included in the Contribution in Aid of Construction or the first monthly billing. Members are contractually obligated and financially responsible for complying with OPALCO's Articles of Incorporation, Bylaws, Member Service Policies and Tariffs. As with any contract, it is the responsibility of the member to be familiar with the provisions of the contract. These documents can be found on OPALCO's website (www.opalco.com) or by contacting OPALCO's Member Service Department at 360-376-3500.

2. FILLING OUT THE APPLICATION FOR NEW SERVICE

The Application for New Service must be filled out completely in the name of the member applying for service and shall include all supporting documentation as requested in

The information provided assists OPALCO in determining the size, type, location and availability of equipment required for a given service. To accurately place equipment in a mutually agreeable manner, a site visit is required with an OPALCO Engineer and the responsible party or a designated representative. All property lines and corners must be located and staked prior to site visit so that OPALCO can determine if easements are necessary. Failure to provide all required information and/or failure to identify property boundaries may result in a charge for the site visit.

Once all of this information has been received, the applicant is then required to schedule an appointment through OPALCO's Engineering Department for a site visit. OPALCO's Engineering Department personnel are available for site visits Tuesday through Thursday. No site visits shall be scheduled for Monday or Friday. Appointments shall be scheduled two (2) weeks in advance to ensure the availability of proper personnel. Replies to written correspondence may take four (4) to six (6) weeks.

All primary equipment and facilities to the member's point of delivery shall be designed, owned, and maintained by OPALCO. OPALCO's Engineering Department shall have sole authority in specifying routing for any extension of OPALCO owned and maintained primary distribution network. All OPALCO facilities and distribution conductors shall be installed along maintainable routes and locations.

Applications for subdivisions, marinas, mobile home courts, commercial or multi-occupant facilities must include the plat drawings that were submitted for approval to the regulating agency.

3. CONTRIBUTION IN AID OF CONSTRUCTION (CIAC)

After OPALCO has received all required information, an estimate of the anticipated equipment, supplied by OPALCO to provide the applicant with reliable service, shall be mailed to the responsible party. This is only an estimate, the party requesting OPALCO's services are required to pay 100% of the actual cost to connect to OPALCO's last point of established service.

All equipment on the member side of the point of delivery including, but not limited to, the secondary conductor, conduit, wiring, service equipment and all associated equipment is the responsibility of the member. **All single-phase 400 amps or less and all three-phase 200 amp meterbases with overcurrent protection shall be approved through OPALCO's Engineering Department before installation.**

All single-phase services of 600 amps and over, or over 200 amps three-phase and above shall be Current Transformer (CT) meterbases. Installation will require a separate member supplied single service-disconnect that includes overcurrent protection, which is located within 2 ft of CT enclosure.

The member shall provide the CT enclosure, CT mounting rack, and the single service-disconnect that includes overcurrent protection. OPALCO will provide at member's expense the CT's, test switch, meterbase and meter.

All Ganged meter packs shall be pre-approved by OPALCO and contain a single service disconnect that includes overcurrent protection for each meter.

All new line extensions must be installed underground. All trenching shall be provided by the responsible party, and must meet the requirements set forth by OPALCO.

4. ACQUIRING EASEMENTS AND PERMITS

Easements - Any OPALCO facilities that are installed on private property shall require an easement from the effected property owner of record. This process takes a **minimum of two (2) weeks**. In most cases, the requirement is a fifteen (15) foot easement from the centerline of OPALCO's buried distribution cable and support facilities, *as installed*, for the installation and continued operation, maintenance, repair and replacement of OPALCO facilities.

New and existing members need to understand that electricity is available to their property because other members have freely given easements across their own property. By becoming a member you have agreed to sign necessary easements.

It is up to the member to approach neighboring property owner(s) about obtaining easement(s) on a neighbor's property prior to OPALCO involvement. The applicant must provide OPALCO with the following required information so that the easement can be properly formatted:

- Plot plan, full legal description(s), tax parcel number(s) and the names as they appear on the ownership documents for all involved properties as well as copies of any existing recorded easements, plats or surveys.
- Evidence in the field of pertinent lot corners, monuments, lot lines and easement and rights of way margins and alignments.

Once OPALCO has drawn up the easement and forwarded it to you, all required signatures must be notarized and one original copy returned to OPALCO prior to the start of construction.

Permits - The Town of Friday Harbor and San Juan County requires all new installations within their rights-of-way to have

Facility Installation Specifications

a valid permit to install electrical facilities. It is the member's responsibility to obtain the necessary permits and engineered drawings, if required, for installation of OPALCO facilities in the town and county rights-of-way. All necessary permits and drawings are to be properly approved prior to construction.

5. PAYING THE CIAC AND OPALCO DESIGN

Payment to OPALCO of the CIAC authorizes OPALCO to begin the formal process of design, procurement, and documentation required for the installation of electrical service to a given location. OPALCO has sole authority over the placement and routing of OPALCO maintained facilities and conductors. Depending on present inventory, workload, and size and nature of work, expect two (2) to four (4) weeks for this process to be completed. After this period OPALCO's Operations Department may be contacted to coordinate scheduling of work. **OPALCO requires 60 days notice for any new or modified service in order to manage equipment inventory.**

6. SCHEDULING

Responsible party may schedule work with OPALCO's Operations Department after receiving notice from OPALCO that the formal design process and documentation has been completed. The Operations Departments General Foreman for your area (*see the OPALCO directory*) will schedule the work on a first come first serve basis and as material inventory will allow. When trenching or installing conduit for OPALCO is scheduled, the responsible party must give the OPALCO Operations Department of their area at least three (3) working days notice prior to start of excavation. In addition, one (1) working day notice shall be given of the intention to stop work on uncompleted jobs, except in circumstances where shut downs are caused by adverse weather or other conditions beyond the installer's control.

7. SETTING METERS

OPALCO will install the meter in the permanent meterbase that was authorized by OPALCO and installed by a responsible party or electrician. The meterbase shall only be energized *after* the following steps have been completed:

- all ditches are backfilled.
- the service has been inspected, approved, and tagged by the state electrical inspector.
- it has been confirmed that the meterbase installation has met the requirements as outlined in the *Meter and Meterbase Specifications* in this brochure.

Under normal conditions, the meter will be set within 72 hours from the time of the call to OPALCO Operations advising that the above conditions have been met. Members may be charged a service fee if OPALCO is requested to install a meter, but the meterbase is not installed correctly or has not been inspected.

CALL BEFORE YOU DIG

By Washington State law, a responsible party causing any damage to underground utilities is financially liable for all repairs associated with damages to the underground installations. Any time work is performed in the vicinity of existing underground facilities, an underground locate is required. Locate requests are made by calling the Underground Locate Center at 1-800-424-5555

OPALCO/MEMBER PROVIDED FACILITIES AND RESPONSIBILITIES

1. EQUIPMENT OWNERSHIP AND REQUIREMENTS

All primary voltage facilities to OPALCO's point of delivery shall be designed, specified, owned, and maintained by OPALCO. **Members may not install their own primary voltage facilities.** OPALCO will install the meter in the member's meterbase. All meterbases on OPALCO's power distribution network must have a single service disconnect that includes over-current protection located within two (2) feet of or as part of the serving meterbase and approved for use by OPALCO. A 60-day notice is required for any new or modified meterbase request. **Any modification to an existing service shall require that the entire service be brought up to present state and local codes, as well as all Member Services Policies requirements.**

All new secondary services shall be underground. Owners shall provide, at their expense, all clearing, trenching, bedding, backfill and restoration, and all other expenses that are not included in the Contribution in Aide of Construction.

All secondary facilities beyond the point of delivery, including but not limited to secondary conductor, conduit, wiring, service equipment, enclosure, meterbase, single service disconnect that includes over-current protection, and all other associated equipment shall be installed and maintained by the member. Members are responsible for meeting all codes and regulations set forth by state and local agencies.

2. CONTRIBUTION IN AID OF CONSTRUCTION (CIAC)

Responsible parties of the property requesting new service or the alteration of existing service are required to pay 100% of the actual costs associated with OPALCO's labor and material involved in bringing to or modifying electricity at their location.

Facility Installation Specifications

Payment to OPALCO of the CIAC authorizes OPALCO to begin the formal process of design, procurement, and documentation required for the installation of electrical service to a given location. Depending on the present inventory, workload, and size and nature of the work, it could take two (2) to four (4) weeks for the process to be completed. OPALCO will notify the responsible party advising as to when OPALCO Operations Department can be contacted to coordinate scheduling. Because transformers are expensive and electrical equipment lead times long, **OPALCO requires 60 days notice for any new or modified service in order to manage equipment inventory.** When the work is completed, any difference in the paid CIAC to actual project cost that is equal to or greater than \$250.00 shall be adjusted in a re-bill or refund. OPALCO will not put any primary distribution cable into service that does not meet current cable specifications and installation practices. Any facilities, which have been de-energized for longer than 12 months, are subject to line retention or abandonment by OPALCO.

OPALCO will generate up to two (2) CIACs per project. Any additional estimates shall be billed at OPALCO's engineering rate. CIACs are only estimates! At all times the responsible party is liable for all costs associated with connection to OPALCO's established point of power distribution.

A transportation fee will be included on all CIACs that require travel to non-ferry-served islands.

3. EASEMENTS

OPALCO requires that adequate easements or public rights-of-way exist prior to the placement of all new facilities in any area. The suitability of easements or rights-of-way for installing OPALCO facilities shall be determined at OPALCO's sole discretion. It is the obligation of the responsible party to provide all needed documentation to make this determination including legal descriptions, ownership documentation, and plot plans of all affected subject parcels and, if applicable, copies of

Facility Installation Specifications

existing recorded easements, surveys, and plats. In addition, the property owner shall provide evidence of pertinent lot corners, monuments, lot lines, easement and rights-of-way margins and alignments in the field. The suitability of this monument for ensuring the proper placement of facilities within the easement or rights-of-way shall be at the sole discretion of OPALCO.

If, in the determination of OPALCO, adequate easements and/or public rights-of-way do not exist for the placement of the proposed facilities, OPALCO requires that suitable easements be executed. Under such circumstances, OPALCO shall prepare the necessary easement documents based on the above described required property information provided by the property owner. OPALCO reserves the right to require that an additional route survey be performed by a qualified, registered land surveyor or engineer at the sole expense of the property owner for inclusion in preparation of the easement. It is the responsibility of the property owner to acquire all needed notarized signatures for the proper execution of all easements, including third party property owners.

4. ALLOWANCE FOR MULTIPLE USE BY OTHERS

The design of new and existing facilities are approved and determined by OPALCO, including the sighting and location of these facilities to enable multiple uses (services including other members). In such circumstances where the location and layout of OPALCO's new facilities and the associated, required easement do not intrinsically accommodate such multiple uses, OPALCO reserves the right to require the member to grant additional easement routes allowing for the future installation, repair and maintenance of multiple use facilities by others (See Fairshare Policy). Any time OPALCO facilities are placed on private property, an easement is required prior to the installation of said facilities. OPALCO will prepare the easement document from member provided information.

5. FAIRSHARE POLICY

Facility Installation Specifications

OPALCO will make a fairshare (partial reimbursement of CIAC) to the property owner of record for which the original CIAC was made, if additional members connect to the facility within four (4) years of the date of payment of the original CIAC of \$30,000.00 or less, not including the meter. If the CIAC for a line extension to a single family residence exceeds \$30,000.00, not including the meter, the fairshare period will be extended to eight (8) years.

Fairshares within the designated reimbursement period shall be figured by OPALCO and calculated so all entities that share the line extension facility have a proportionate monetary interest in said shared facilities, based on the original CIAC. Fairshare will be released upon the activation of a metered service by the additional member(s).

Subdividers or developers installing line extensions to and/or within subdivisions, mobile home courts and marinas are *not* entitled to fairshare. Fairshare is limited to the original contributors of line extension. The original contributors of the line extension become ineligible for fairshare upon sale, transfer of title, or subdivision of the property.

6. LINE RETENTION POLICY

Members have 12 months from date of installation of conductors and facilities to energize (install a meter) at a transformer installed on their behalf. At the 13th month, the account is subject to the line retention rate, provided that there are no other metered services on that transformer. Payment of the line retention rate assures that the facilities remain in place for future use. Refusal or failure to pay the line retention rate allows OPALCO, at its sole discretion, to remove or abandon the idle equipment and facilities. Any future services at that location would be subject to a reapplication for service at the member's expense. All connections to OPALCO's distribution network shall require that the installation meet present OPALCO installation guidelines.

7. PROTECTIVE EQUIPMENT

It is the member's responsibility to provide suitable protective equipment for the devices and appliances on their premises. The member should install surge suppression devices to protect sensitive electronic equipment such as computers and other home electronic appliances from overload, short circuit, phase failure, transient voltage spikes caused by lightening, system failures, normal utility load switching, etc.

Where the member requires a degree of regulation of the characteristics of the electrical service greater than that normally furnished by OPALCO, the member shall be responsible for obtaining, installing and maintaining the required regulating equipment.

Where three-phase equipment is used, it is the member's responsibility to protect such equipment against loss of phase and reverse phasing, as well as under-and-over voltage conditions.

8. THREE-PHASE SERVICE

Three-phase service is available only in specific portions of OPALCO's service territory. Members requiring three-phase service must check with the OPALCO Engineering Department to determine the cost and availability.

9. SINGLE-PHASE SERVICE

The vast majority of OPALCO's distribution network is single-phase. OPALCO's distribution lines do have limitations. Large single-phase loads can have operational problems or may cause objectionable voltage dips to neighboring members. Before any new load is connected onto OPALCO's distribution network,

OPALCO requires that notice be given so that an assessment may be conducted of the effects this additional service or load may have on the network.

If the load of an existing facility increases, requiring a change in transformer or meter size and the member (or owner of

Facility Installation Specifications

record) has been paying for power at this facility for more than five (5) years, OPALCO shall change out the transformer and/or meter at OPALCO's expense. If the member has been paying for power at this facility for less than five (5) years, the member shall change out the transformer and or meter at their expense.

If the load of a transformer or meter increases due to the addition of *new* facilities being served by the transformer, the owner(s) of the added facilities shall pay all costs to change out the transformer and/or meter.

10. ADDITION TO SINGLE-PHASE LOADS

The responsible party shall give at least 60 days written notice to the OPALCO Engineering Department of any additional load requirements on single-phase transformers. This includes, but is not limited to, additional facilities and/or service runs to an existing meterbase. Modification to an exiting meterbase will require that in be brought up to present OPALCO standards. Specialized equipment such as transformers may have lengthy delivery schedules, and the Engineering Department requires time to assess the impact of the increased load on the power distribution network. OPALCO will issue a preliminary design estimate based on the information supplied by the responsible party. The initiating party is responsible for all costs to accommodate increased service capacity on the primary distribution network.

11. ADDITION TO THREE-PHASE LOADS

The responsible party shall give OPALCO at least six (6) months advance notice of any additional load requirements, or the addition of facilities or service runs to an existing meterbase, on any three-phase transformers or bank of transformers forming a three-phase system. Specialized equipment such as three phase transformers may have lengthy delivery schedules and the Engineering Department requires time to assess the impact of the increased load on the power distribution network.

OPALCO will issue a preliminary design estimate based on the information supplied by the responsible party. The initiating party is responsible for all costs to accommodate increased service capacity on the primary distribution network.

12. CONVERSION FROM SINGLE-PHASE TO THREE-PHASE

Three-phase service is made available only in specific portions of OPALCO's service area. The responsible party who is planning to convert from single-phase to three-phase shall check with OPALCO to determine the availability and cost of providing three-phase service. All costs associated with conversion from single-phase to three-phase shall be paid for by the requesting responsible party. OPALCO's power distribution network has no "single-phase" protection of three-phase lines. It is the responsibility of the requesting party to protect their three-phase equipment from loss of phase or reverse direction conditions.

13. POWER QUALITY OR SUSPECT SERVICE

Should voltage fluctuation or blinking lights occur, the first step is to call an electrician to verify that the service panel is grounded and the secondary connections are tight. After the electrician verifies that the secondary is in proper condition, OPALCO Engineering Department may be called for assistance. At all times the member is responsible for all costs associated with the trouble shooting, investigation, or maintenance of the electrical system beyond OPALCO's point of delivery (connection).

14. CHANGES TO OPALCO'S SYSTEM

OPALCO will make changes to its Power Distribution network when, in OPALCO's judgment, such change will result in a better, more efficient or more reliable system. Examples include adjusting transformer size based on load, installation of sectionalizing equipment, installation of special metering or data collection equipment, etc. OPALCO may use all or part of a member's line extension as part of a system improvement without paying a fairshare.

15. UNDESIREABLE SERVICE CHARACTERISTICS

Undesirable service characteristics are defined as service(s) connected to OPALCO's distribution network, which effect the power quality, reliability, and cost to distribute power on the power distribution network. To limit the affects of undesirable service characteristics to the membership, OPALCO requires the following for continued service:

Reduced Voltage Starting – Individual single-phase or three-phase motor units rated seven and a half (7.5) horsepower or more shall be controlled by soft start or reduced voltage starters.

Three Phase Required – Individual motor units rated at more than seven and a half (7.5) horsepower shall be three-phased when three-phase service is available, unless otherwise approved in writing by OPALCO prior to installation.

Highly Fluctuating Loads – OPALCO may disconnect service to a owner/member who adds any load that causes a large fluctuation in voltage or a significant disruption to the electric system, or otherwise disturbs the service provided to other members.

Harmonics – A member installing equipment that can be expected or found to generate harmonics will be required to install appropriate filters to remove the harmonics at the member's expense. OPALCO may require that a member increase the size of the neutral conductor to accommodate for increased neutral conductor load as a condition of continuing to provide power to the facility(s) from which the harmonics emanate.

Additional Protection Device – Members installing electrical service(s) or electrical equipment that OPALCO determines could potentially cause additional risk to the distribution network will be required to pay for additional protection device(s) on the primary side of the serving transformer.

16. CAUSE FOR DISCONNECTION

OPALCO will immediately disconnect service to a member without advance notice under the following conditions:

Immediate Hazard – Service will be disconnected if an immediate hazard exists which threatens the health or safety of the member, the general population or OPALCO’s personnel or facilities.

Meter Tampering – Service will be disconnected if OPALCO has evidence of meter tampering, power theft, or fraud by a responsible party.

Curtailement – Service will be disconnected if the responsible party has failed to comply with the curtailment procedures imposed by OPALCO during an emergency.

Undesirable Service Characteristics – Service(s) that cause(s) undesirable service characteristics on OPALCO’s power distribution network shall be immediately disconnected until the responsible party has corrected the condition to OPALCO’s satisfaction. OPALCO has sole authority in determining the effect of a connected service on OPALCO’s distribution network. OPALCO holds no liability for disconnecting said service for the purpose of protecting the power distribution network.

Failure to Provide OPALCO with Easement on Property – All facilities owned and maintained by OPALCO on private property require an easement. Orcas Power and Light Cooperative’s membership Application agreement includes the requirement for a member to grant to the Cooperative and its assigns reasonable requests for easement(s). Failure to fulfill this obligation may result in the denial or discontinuation of membership.

In the event that the member does not or will not provide OPALCO with an easement for an existing primary distribution line serving transformer(s) on the property, OPALCO may, at its own discretion, disconnect the member’s service and relocate OPALCO owned facilities back to a point of legal private easement or public rights-of-way. In such cases, all reconnections to OPALCO facilities shall be treated as a new service request. The responsible

Facility Installation Specifications

party refusing legal easement is liable for all costs associated with installation of their meterbase and the reconnection of secondary conductors, regardless of date of service or installation. OPALCO shall give the owner a 60-day notice in advance of relocation of OPALCO facilities. It is the members responsibility to apply to OPALCO for a new service, obtain any electrical permits required, secure all secondary easements required to connect to OPALCO facilities, and to arrange and pay for trenching and installation of secondary conductors.

Failure to Provide Adequate Clearances for and around OPALCO Facilities – It is the member’s responsibility to maintain adequate clearances around all OPALCO facilities on their property in a manner which will not hinder access. Failure to maintain facilities in a manner requested by OPALCO may result in OPALCO removing it’s facilities from service. The owner/member shall be responsible for the full disposal and replacement cost of any equipment found to have failed due to inadequate clearances.

Failure to Meet Contractual Obligations Agreed to as a Requirement of Membership – OPALCO is a member-owned, non-profit, electrical cooperative that is governed by a Board of Directors elected by the membership. The Board has elected to require individuals and parties to agree to abide by the provisions of OPALCO’s Articles of Incorporation, By-Laws, Member Services Policies, Tariffs and Membership Application as a prerequisite for Membership. Failure to comply with these provisions may result in loss of membership. Responsible parties who elect not to comply with all provision in the above mentioned documents will be notified of the violation and required action in writing. Responsible parties shall be given 120 days to comply with membership obligations. After the expiration of this period, OPALCO shall deem failure to comply with the required provisions as a surrender and forfeiture of membership. OPALCO shall remove all meters connected in the responsible party’s name.

17. ENERGY EFFICIENCY

OPALCO's Energy Services Department has detailed information on many aspects of energy efficiency, including heat pumps, electric thermal storage units, appliance rebates and energy efficiency tips. Members may contact the Energy Services Department at the number listed in the OPALCO Directory.

18. GO ELECTRIC!

OPALCO has done extensive research to verify that electricity is the most efficient use of energy available here in San Juan County. OPALCO's Energy Services Department has valuable information that can help in the wise use of energy resources.

19. GO GREEN!

OPALCO invites members to participate in the Go Green Program, helping the environment by increasing the demand for cleaner forms of energy and making an investment in the future needs of San Juan County.

20. INTERCONNECTION WITH MEMBER OWNED GENERATION EQUIPMENT

OPALCO encourages the interconnection and operation of alternative electric generation such as solar, wind and micro-hydro. Interconnection must be in accordance with OPALCO Member Service Policy 14. The Energy Services Department has more information regarding this topic.

21. PROJECT PAL

OPALCO's Project PAL Program awards grants to members who qualify for assistance in paying their power bill. Members are invited to voluntarily round up their monthly power bill to the next whole dollar for contribution to the Project PAL fund. The yearly contribution averages about \$6.00 per year, per account. Anyone having financial difficulty, and needing assistance with their power bill can contact the OPALCO office of your area for a Project PAL application form.

OPALCO FACILITY INSTALLATION SPECIFICATIONS

ELECTRIC SERVICE REQUIREMENTS

Electrical conductors leaving the member's meterbase are not protected by any device until they are connected to the member's service-disconnect and over-current protection device. The service-disconnect and over-current protection device does not protect OPALCO's distribution network or the member's secondary conductors from failure between the transformer and the device. Because these secondary conductors are beyond the reasonable control of the Cooperative, OPALCO attempts to fairly manage the risk of each meter installation by requiring that each meterbase's secondary conductors be terminated into a single service-disconnect and over-current protection device with an ampacity rating equal to or smaller than the size of the meterbase rating. The service-disconnect and over-current protection device must be located within two (2) feet of or be a part of the meterbase. The short-circuit current capable of being delivered by a transformer shall be determined by OPALCO's Engineering Department and be validated by the transformer's manufacturer.

Any remodeling of or additions to existing facilities in which any portion of the electrical service conductors or serving meterbase are to be modified, upgraded, or relocated shall be required to meet the Electric Service requirement below:

OPALCO requires a 60-day written notice of any proposed increase of facilities, meterbase installation or modifications on the power distribution network.

At no time does OPALCO allow entrance into an existing meterbase to add or modify a service connection without the advanced approval of OPALCO's Engineering Department. Termination of all secondary connections shall be attached into a U.L. listed device specifically designed and rated to be installed in OPALCO approved meterbases.

Facility Installation Specifications

OPALCO has sole jurisdiction over metering equipment location, and meter equipment installation and connection requirements. Members or contractors found to have modified any meterbase installation shall be liable to OPALCO for damages. No meters shall be set by OPALCO personnel for contractors or members found to have modified an OPALCO meterbase installation, without OPALCO's knowledge and direction, until damages have been collected by OPALCO and required corrective action has been completed.

MEMBER-PROVIDED EQUIPMENT

All equipment beyond the point of delivery shall be owned by the member including but not limited to the secondary conductors, conduit, wiring, service equipment, enclosure, meterbase, disconnect switch, and associated equipment. All member owned electrical equipment shall be installed to conform to OPALCO Member Services Policies. It is the responsibility of the member to maintain the installation on the member's side of the point of delivery.

INSTALLATION AND ACCESS

Installation of all meterbases must be in accordance with all state and local codes and OPALCO's Member Services Policy. All meterbase locations shall be approved by OPALCO Engineering prior to installation and must be located so that they are easily assessable by OPALCO staff with no obstructions within two (2) feet to either side of the meter and three (3) feet in front of meter. OPALCO requires that the meterbase installation be inspected and approved by the state electrical inspector (a state service approval label must be in place prior to a service being energized). All secondary trenches must be backfilled, and pedestal or uni-strut meterbase support must be set in the earth with at least 80 pounds of concrete prior to OPALCO setting a meter. OPALCO will not set any meter until all state and local codes, and OPALCO's Member Services Policy have been met.

OPALCO CONNECTIONS

Neither the member nor the member's electrical contractor is allowed to perform any work on an OPALCO facility (e.g. pole, structure, transformer, or other equipment). The member or the member's electrical contractor must provide a length of conductor for OPALCO's use in completing the member's connection to OPALCO's equipment. OPALCO will determine the length of conductor necessary and the location where the member's installation will terminate.

OPALCO will allow contractors to make OPALCO authorized connections to member's meterbase. All meterbase secondary conductor penetrations serving underground services shall enter the meterbase from the bottom.

LOCATION

Alternate service locations requested by any member are subject to review and approval by OPALCO's Engineering Department prior to installation. Due to line loss issues and under normal conditions, the member's meterbase must be located next to the serving transformer.

Any variation from this requirement must be approved in writing by an OPALCO Engineer prior to installation. Voltage problems due to the customer's installation are not the responsibility of OPALCO.

CHANGES IN LOCATION OR SIZE OF SERVICE EQUIPMENT

OPALCO's Engineering Department has sole jurisdiction over the location of all facilities which are maintained and read by OPALCO personnel. Any change in the location of a service connection, provided such change is approved by OPALCO, will be paid for by the member. A meterbase that has been installed, modified, or increased in size without OPALCO's pre-approval and authorization will not be connected to OPALCO power distribution

MEMBER INITIATED CONVERSIONS

Owners/members may request the conversion of overhead primary or secondary facilities to underground if the overhead or secondary facilities are located on their property. If OPALCO agrees to the request, those requesting the conversion will be responsible for the total actual costs of conversion and supplying all associated easements to OPALCO.

INSTALLATION SITES

OPALCO Engineering shall approve and stake the location of all facilities that will be owned, maintained, or read by OPALCO, including, but not limited to: transformers, sectionalizing equipment, vaults, poles, anchors, loops, and meterbases. The location of the OPALCO facilities must be installed along maintainable routes and shall be prepared so that equipment does not end up in a depression or on a mound of significantly different elevation than the surrounding area. All transformer, loops, and switch pedestals sites are to be sand bedded, as shown in Figure 1, or with prior approval by OPALCO, filled with 3/8" or 5/8" crushed rock on a 4' x 8' x 2' excavated pad.

Facility Installation Specifications

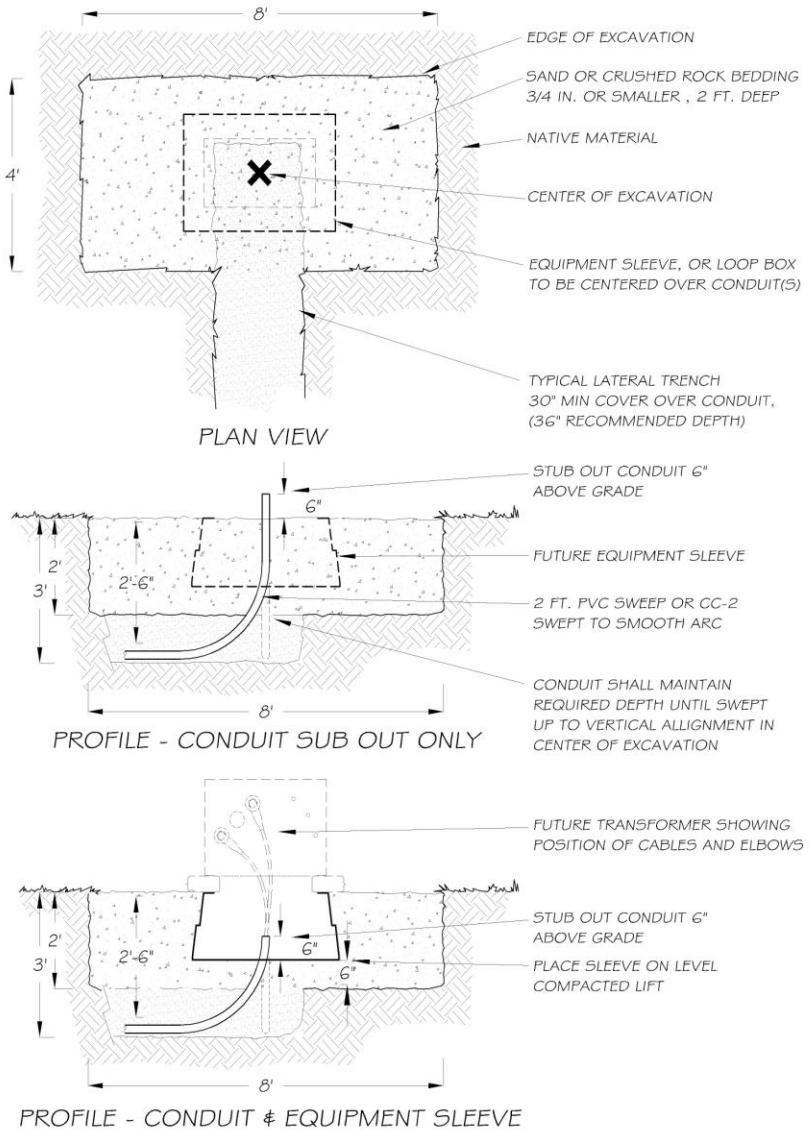


Figure 1 – Transformer Site Preparation

TRENCH AND CABLE INSTALLATION SPECIFICATIONS

It is the duty of the responsible party to obtain any necessary San Juan County Public Works Permits for all installations along county road rights-of-way.

The responsible party will maintain all OPALCO underground primary power lines with a minimum of 30” of cover over the cables and/or conduit.

All OPALCO primary power lines shall be installed at a minimum of 12”, vertically or horizontally, either from other utility cables or waterlines. When LPG gas lines are installed in an OPALCO power line trench, the power line shall be installed and maintained with 18” of clearance either vertically or horizontally from the LPG gas line.

In the event that OPALCO underground primary power lines are buried with sewer and/or liquefied fuel lines, the following limitations apply:

- All OPALCO primary power lines shall be installed in conduit, and all sewer lines in the same trench will be solid line (tight line - Schedule 40) and liquefied fuel lines will maintain a minimum of 24” of horizontal separation from the closest point of each conduit.
- Perforated sewer lines will not be allowed in an OPALCO power line trench.
- If these clearance requirements cannot be met, a separate trench will be required for OPALCO underground primary lines. On all OPALCO underground primary power installations, the marking tape (terra-tape) shall be installed 18” above the power cable, or 12” below finished grade. (See Figure 2)

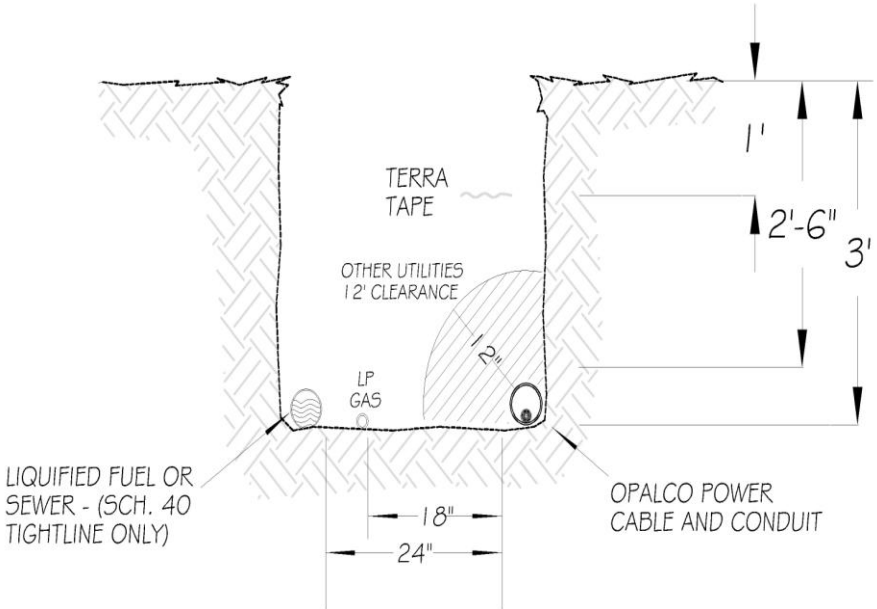


Figure 2 – Trenching/ Cabling

CLEARANCES – LANDSCAPING

OPALCO facilities must remain visible and accessible at all times. OPALCO personnel are required to locate facilities during periods of bad weather, and in the dark. Landscaping around OPALCO facilities which renders the facilities difficult to locate or access, or decreases the life of facilities shall be remedied in one of four ways.

- 1) The member shall modify landscaping to OPALCO's satisfaction within 90 days.
- 2) The member shall be required to pay all cost associated with the relocation of facilities. (Reconnection of facilities will be treated as an application for new service.)
- 3) The member shall agree, in writing, to pay all future costs incurred by OPALCO in maintaining and accessing the facilities. The member shall be required to pay full clean-up and facility replacement cost of any equipment whose failure is attributed to members landscaping. The member un-

Facility Installation Specifications

derstands that the facilities may be disconnected at any time if OPALCO feels that there is a risk to the facilities.

- 4) OPALCO may disconnect all above ground facilities which can not be maintained or accessed, and will remove facilities from the site if a way can be found to do so safely.

OPALCO shall give the member a 90-day written notice of any corrective action required. If the member does not select and complete any of the corrective remedies described above, OPALCO may apply remedy four (4) at any time after this 90-day period.

The member is responsible for providing and maintaining the required minimum clearances to OPALCO equipment, facilities, features and the meterbase as shown in Figure 3 and listed below:

- 10 feet from all obstructions on the front (opening) side of the transformer
- 8 feet to any combustible structure.
- 20 feet to liquid propane, gas and fuel storage tanks.
- 6 feet to telephone, cable/television pedestals.
- 3 feet to all other utilities such as water.
- 3 feet to all other obstructions such as shrubs, sidewalks, boulders, etc.
- 8 feet to trees, fire hydrants or embankments.

The transformer and meterbase must be visible and accessible to OPALCO employees and free of vegetation at all times.

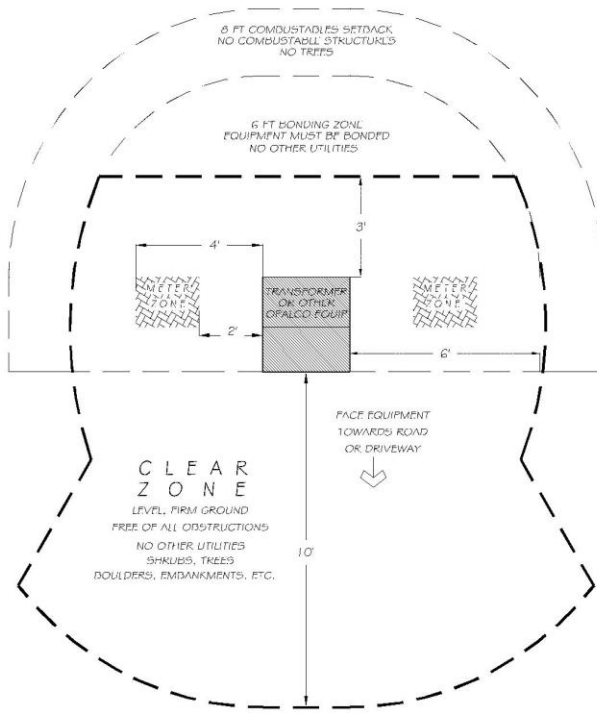
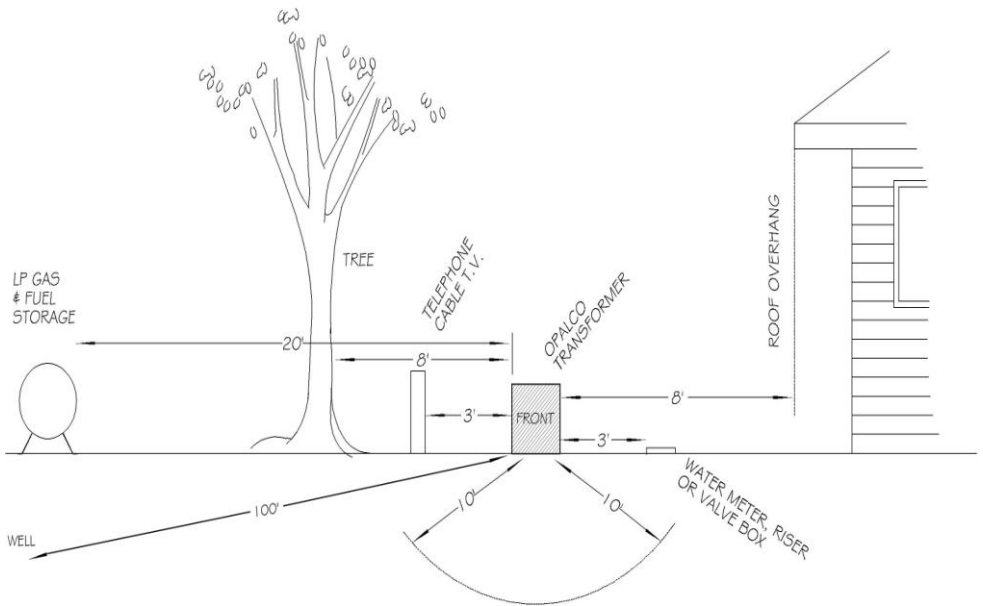


Figure 3 – Pad-Clearances

An OPALCO Staking Engineer will make a site visit and mark (stake) the location of all meterbases. All meterbase locations must be approved by OPALCO before the meterbase is set in place. Meterbases installed without prior approval will not be connected.

U.G. TRANSFORMER SETBACK REQUIREMENTS



NOTES:

1. PLACE TRANSFORMERS ON AS LEVEL GROUND AS POSSIBLE.
2. MAINTAIN MINIMUM HORIZONTAL CLEARANCES TO OTHER FACILITIES AND FEATURES AS FOLLOWS:
 - 8 FEET TO ANY COMBUSTABLE STRUCTURE (AS MEASURED TO EAVES OR OVERHANGS AS SHOWN ABOVE)
 - 20 FEET TO LIQUID PROPANE, GAS, AND FUEL STORAGE TANKS
 - 6 FEET TO ALL OTHER UTILITIES SUCH AS WATER, TELEPHONE, CABLE T.V., ETC.
 - 3 FEET TO ALL OTHER OBSTRUCTIONS SUCH AS SHRUBS, SIDEWALKS, BOULDERS, ETC.
 - 8 FEET TO TREES, FIRE HYDRANTS, OR EMBANKMENTS.
 - 100 FEET TO WELLS.
3. MAINTAIN 10 FEET CLEARANCE FROM ALL OBSTRUCTIONS ON FRONT SIDE (OPENING SIDE) OF TRANSFORMER.
4. TRANSFORMER MUST BE ACCESSIBLE TO OPALCO EMPLOYEES AND FREE OF VEGETATION AT ALL TIMES FOR ROUTINE AND EMERGENCY WORK.

Figure 4 – Clearances / Landscaping

CONDUIT

Acceptable conduits for OPALCO's underground primary power cables shall be specified and authorized by OPALCO only. Installation of conduits without OPALCO's authorization shall not be accepted for use by OPALCO.

Conduit Is Required:

- In all primary underground installations owned and maintained by OPALCO.
- In any other areas specified by the design engineer.

Conduit Runs Shall:

- Be restricted to 600' to 700' between pulling points, or as specified by the OPALCO Engineer.
- Be laid in the trench as straight as possible and shaded with sand or rock-free material so the conduit is not damaged.
- Be from one pull point to another.
- Not exceed 360 degrees total of bends between pulling points in PVC conduit installations of 2" PVC conduit or larger. Conduit sizes of less than 2" shall not be allowed for use with primary conductors.
- Extend vertically from the trench line and end 6" above the final grade of the excavation.
- Have the ends capped off above ground and stubbed into a loop box or vault.

Sweeps:

- Where sweeps exit the trench line, they will exit on a vertical plane and end 6" above the final grade of excavation.
- Where sweeps are installed in a PVC conduit installation, in any one section between pulling points, not more than two (2) 36" radius sweeps are to be used.

Facility Installation Specifications

- Due to the nature of polyethylene conduit, pre-formed sweeps are most often not necessary. At the ends, the duct should be swept gradually to negate any sharp bends or kinks in the duct. Total degree of bends between pulling points shall not exceed 360 degrees. PVC sweeps shall be used with the appropriate couplings if a vertical exit from the trench line cannot be maintained.

MEMBER-INSTALLED CONDUIT SYSTEM

Member provided and installed conduit installations for OPALCO underground primary power lines will be installed per an OPALCO pre-approved design and as specified. A \$50.00 inspection fee will be included on the Contribution In Aid of Construction for an OPALCO inspection of all member-installed conduit. There will be a \$150.00 fee for OPALCO to install a pull line and certify conduit installation for future use. If the Member provided conduit system is unacceptable per OPALCO's Facility Inspection Specifications, the member shall, at her/his own expense, satisfy the requirements for installation before power cable will be installed. If cable cannot be pulled into member provide conduit, the member shall, at their own expense, be required to pay for the re-installation of conduit.

METER AND METERBASE SPECIFICATIONS

CAUTION: Improper handling of a meter is not safe. Removal of an installed meter does not always de-energize a service entrance.

Meter location is subject to OPALCO's approval.

Meterbases shall not be used as splice or pull boxes and shall not be slugged.

The member or the contractor will be held liable for any personal injury or property damage if inadequate installation notice or information was given to the OPALCO, or if meter location approval by OPALCO was not granted.

Facility Installation Specifications

Members or contractors are not authorized to relocate or remove any meter belonging to OPALCO or interfere in any way with the meter or its connection. The member must contact OPALCO for any work that involves relocation, rewiring, removal or installation of a meter.

All secondary installations extending from OPALCO transformer location shall be feed underground, and shall meet all state and local codes, and OPALCO specifications prior to connection.

If installation is along the county road rights-of-way, the member must secure the proper county permits. Notification and compliance is required by the San Juan County Public Works Department.

If a service has been removed due to abandonment, or has been removed at the members request for a period considered to be abandonment, it must be upgraded to current OPALCO requirement before service is re-established. However, if a facility becomes unsafe, the member may be disconnected for safety reasons and the service may then be subject to re-establishment requirements.

OPALCO does not allow temporary meterbase installations.

Meters will not be installed unless the service conductor connections are tight and conform with the wiring diagram for the class of service involved. Where large conductors are connected to terminals in box or trough-type sockets, meters will not be installed if conductors are placing undue strain on the terminal facilities. Terminals are rated for the size of conductor to be used. Do not remove strands to make conductors fit undersized terminals.

Arrange entrance wiring so that metered circuits do not enter raceways or enclosures containing un-metered circuits.

All meterbases must be self supporting on supports made of strut metal, and shall be set in a minimum of 80 pounds of concrete. Meterbases shall not be mounted on or attached to wooden post or timber.

All equipment is to be installed per electrical codes with proper permits and inspections.

Facility Installation Specifications

An electrical inspector must approve and tag the installation prior to OPALCO installing a meter and connection wires.

Single-phase meterbases 400 amps and under and three-phase 200 amps and under shall be approved by OPALCO's Engineering Department and shall have a single service-disconnect that includes over-current protection. Current Transformer (CT) meterbase installation will require a separate member supplied single service-disconnect that includes over-current protection, which is located within 2 ft of CT enclosure.

All meterbase, enclosures, and conduit must be bonded and grounded in accordance with Articles 230 and 250 of the latest edition of the NEC. NEC 250-84 requires two ground rods where a single ground electrode has a resistance over 25 ohms.

Sequence of service must be (1) meter, and (2) disconnect switch.

Meterbases which have been installed without approval shall not be connected.

For Rural Residential and Large-Lot Subdivisions, All Meterbases Will Be:

- installed at the transformer, as permanent and freestanding (see Figures 5 and 6) and shall maintain 36" of clearance from center of installed meter to finished grade.
- set in concrete and mounted plumb.
- mounted perpendicular to the transformer and behind the plane of access or service lid to the transformer.

For Small-Lot Subdivisions, Mobile Home Courts, Multi-Occupant and Commercial Building All Meterbases Will Be:

- installed at the transformer according to the criteria as stated for Rural Residential and Large Lot Subdivisions (above), or

- With pre-approval from the OPALCO's Engineering Department, it may be permissible to mount meterbase (s) on the building, however, the distance from the transformer to the location of the meterbase (s) may be no more than 100' and the appropriate sized conduit and conductor shall be installed. A single service-disconnect that includes over-current protection shall be required within two (2) feet of the meterbase.

All equipment beyond the point of delivery shall be owned and maintained by the member.

MULTIPLE METERING SERVICES (GANGED METERBASES)

Each metered service must have a permanently engraved metal or hard plastic label to identify the customer's address. The label must be permanently attached to the top half of the meter enclosure. The Service will not be energized until the label is permanently attached.

Vacant meter positions shall be factory sealed, or the meter shall be in position before the panel is energized.

All removable panels and covers to compartments used for metering shall be sealable.

Metering conductors shall not pass through adjacent metering compartments except in enclosed wireways.

NEC requires a main disconnect when more than six services are connected. If an existing installation expands beyond six services, a main disconnect shall be installed.

CONNECTING FROM AN OPALCO POLE-MOUNTED TRANSFORMER

The meterbase shall be mounted on a freestanding support no closer than 6 feet, but not more than 8 feet, from the face of the pole. Under no circumstance shall the meterbase be mounted on the pole.

Facility Installation Specifications

All secondary risers extending from the meterbase to the pole mounted transformer shall be mounted on the pole with standoffs, supplied by OPALCO, that allow a minimum of 6” clearance from the conduit to the pole surface. Pole risers will be installed on OPALCO poles by OPALCO Operations personnel to assure proper placement.

POLE TAKEOFF METER INSTALLATION

NOTES:

1. INSTALL ALL EQUIPMENT PER ELECTRICAL CODES AND OBTAIN PROPER INSPECTIONS.
2. OBTAIN PROPER PERMITS FROM SAN JUAN COUNTY PUBLIC WORKS DEPARTMENT FOR ALL INSTALLATIONS ALONG COUNTY] ROAD RIGHT OF WAY.
3. ALL METERBASE LOCATIONS SHALL BE SPECIFIED BY OPALCO'S ENGINEERING DEPARTMENT.
4. ALL METERBASES SHALL BE APPROVED BY OPALCO AND MUST HAVE A SINGLE SERVICE DISCONNECT THAT INCLUDES OVERCURRENT PROTECTION.
5. ALL METERBASES SHALL BE A MINIMUM OF 6 FEET AWAY FROM FACE OF POWER POLE, BUT NO MORE THAN 8 FEET FROM POWER POLE.
6. ALL METERBASES SHALL BE GROUNDED.

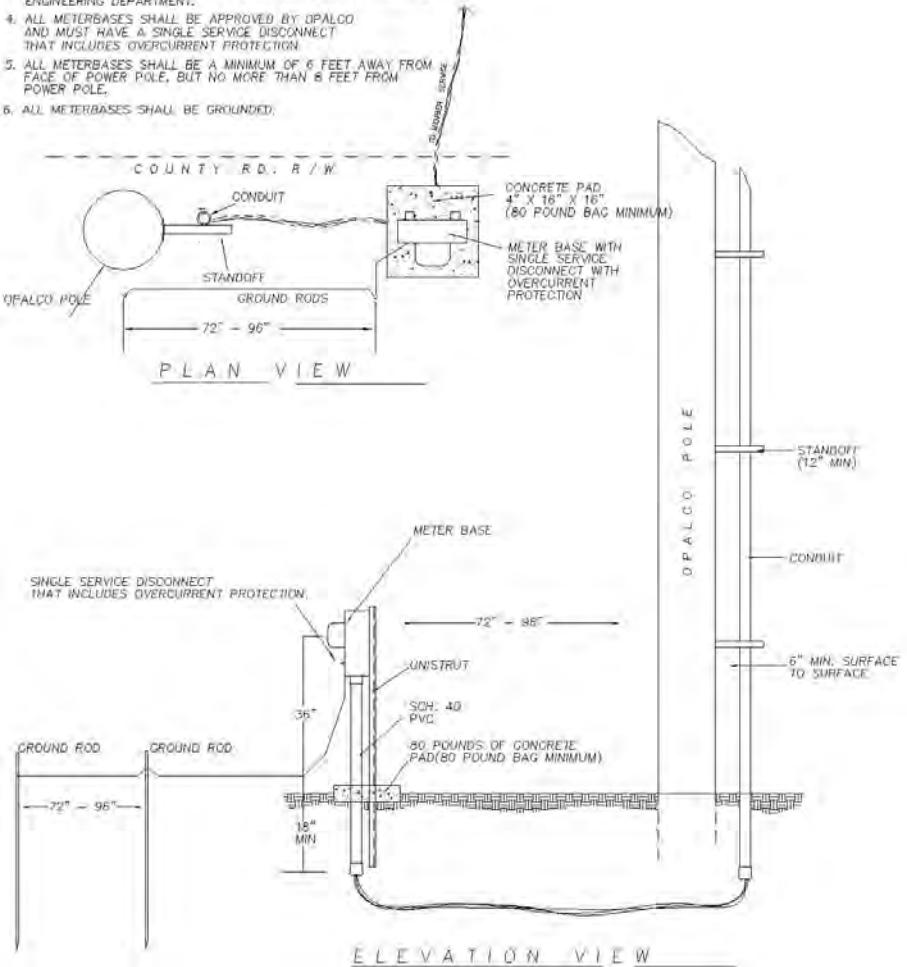


Figure 5 – Pole-Mount Transformer / Meter Installation

CONNECTING FROM AN OPALCO PAD-MOUNT TRANSFORMER

The meterbase for a residential installation shall be set no closer than 2' and no further than 4' from the transformer.

The secondary service tails shall be extended to the transformer, leaving adequate service wire for OPALCO to make the connections to the transformer.

All meterbases shall be approved through OPALCO's Engineering Department and shall have a single service-disconnect that includes overcurrent protection.

State of Washington Electrical permit must be applied for and inspection complete before contacting OPALCO for connection to transformer.

U.G. TRANSFORMER METERBASE INSTALLATION

NOTES:

1. INSTALL ALL EQUIPMENT PER ELECTRICAL CODES AND OBTAIN PROPER INSPECTIONS.
2. OBTAIN PROPER PERMITS FROM SAN JUAN COUNTY PUBLIC WORKS DEPARTMENT FOR ALL INSTALLATIONS ALONG COUNTY ROAD RIGHT OF WAY.
3. ELECTRICAL INSPECTOR MUST APPROVE AND TAG INSTALLATION PRIOR TO OPALCO INSTALLING METER AND CONNECTING WIRES.
4. ALL METERBASES SHALL BE APPROVED BY OPALCO AND MUST HAVE A SINGLE SERVICE DISCONNECT THAT INCLUDES OVERCURRENT PROTECTION.

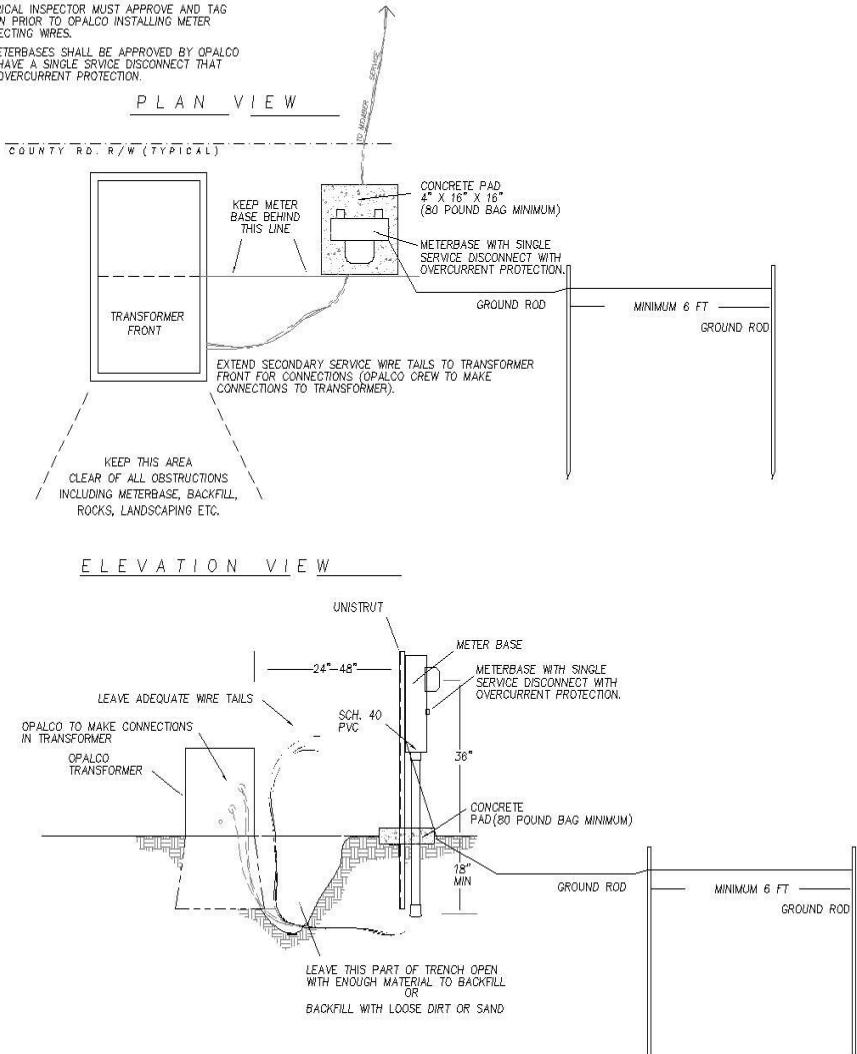


Figure 6 – Pad-Mount Transformer / Meter Installation

OPALCO APPROVED METERBASES

Single-Phase, 3 Wire, 120/240V;

100 Amp - (CL 200 – F2S)

- MILBANK #U5100-XL
- SQUARE D #SC1624M-100S
- MIDWEST #M101CB2

200 Amp - (CL 200 – F2S)

- MILBANK #U3584-O-200
- MILBANK #U5198-XL-200S
- MILBANK #M400-UG-APS-LC
- MIDWEST #M281-
- MIDWEST #M254CP6
- MIDWEST #M208CP6HP
- SQUARE D #SC816F200C
- SQUARE D #SC816F200S
- CUTLER HAMMER #CMBEB200BTS

400 Amp Service with One (1) 400 Amp Main Breakers – (CL 320 – F2S)

- MILBANK #M401-UG
- COOPER B-LINE #U404MC
- DURHAM HC364N4T (Specify 400 amp main)

400 Amp Service with Two (2) 200 Amp Main Breakers – (CL 320 – F2S)

- MILBANK #M400-UG-APS-LC
- SQUARE D #CU816D400CB
- COOPER B-LINE #U4042MC
- MIDWEST MS45508C
- DURHAM HC364N4T

Three-Phase, 4 Wire, 208/120V or 240/120V Delta; – (CL 200 – F16S)

- SQUARE D #EZM3225TB
- SQUARE D #EZM3225TBCU
- MILBANK #U227MTB

Three-Phase, 4 Wire, 480/277V or 240/120V Delta; – (CL 200 – F16S)

- MILBANK #U227MTB-48/22

CT METERBASES

All meterbases to be used in applications containing current transformers **shall have** "test switches" to provide for shunting of all current transformers upon removal of the electric meter. All such meter bases shall be clearly labeled:

CAUTION: Removal of a CT meter Does Not De-Energize the Circuit

Current transformer ratios will be selected by OPALCO based on information supplied by the member.

OPALCO reserves the right to change current transformers to provide metering accuracy.

Current transformer rated meter base's must be mounted within two (2) feet of the single service disconnect that includes over-current protection and shall be effectively grounded so as to pass L & I inspection.

The minimum conduit size for CT meter wiring is one inch.

The meter base may be attached directly to the side of the current transformer enclosure in free-standing applications; however, it must not impede the ability to open the current transformer cabinet cover.

All meterbases to be used in applications containing current transformers shall be of the "manual circuit closing with test block" type to provide for shunting all current transformers upon removal of electric meter.

***CURRENT TRANSFORMER METERING
STANDARD SINGLE-PHASE 600 AMP AND OVER,
AND THREE PHASE OVER 200 AMP***

Single-Phase, 3 Wire, 120/240V CT Metering; (CL 20 – F4S)

	<u>Manufacturer</u>	<u>Enclosure</u>	<u>Mounting Rack</u>
400 Amp:	MILBANK	#CT243611-SC	#K4903
	CIRCLE AW	#243611RTCT	#6019HAL
401-800 Amp:	MILBANK	#CT364811-HC	#K4729
	CIRCLE AW	#364811HRTCT	#6019HEL

3 Wire 120/208V CT Metering; (CL20 – F5S)

	<u>Manufacturer</u>	<u>Enclosure</u>	<u>Mounting Rack</u>
400 Amp:	MILBANK	#CT243611-SC	#K4903
	CIRCLE AW	#243611RTCT	#6019HAL
401-800 Amp:	MILBANK	# CT304811-HC	#K4729
	CIRCLE AW	#304811HRTCT	#6019HEL

**Three-Phase, 4 Wire, 120/208V or 277/480VCT Metering;
(CL 20 – F9S)**

	<u>Manufacturer</u>	<u>Enclosure</u>	<u>Mounting Rack</u>
400 Amp:	MILBANK	#CT303611-HC	#K4904
	CIRCLE AW	#303611HRTCT	#6067HAL
401-800 Amp:	MILBANK	# CT304811-HC	#K4722
	CIRCLE AW	#304811HRTCT	#6067HEL

NOTES:

The member shall provide the CT enclosure, CT mounting rack, and the single service-disconnect with overcurrent protection. OPALCO will provide at, member's expense, the CT's, test switch, CT meterbase and meter.

CT ENCLOSURES must size per the NEC.

NOTES:

OPALCO DIRECTORY

OPALCO:

- Billing Inquiries - Areas 1 & 3376-3500
- Billing Inquiries - Area 2376-3550
- CALL BEFORE YOU DIG.....1-800-424-5555
- Energy Efficiency/Go Green.....376-3571
- Engineering - Area 1376-3510
- Engineering - Area 2376-3539
- Engineering - Area 3376-3510
- Fax - Orcas Office.....376-3505
- Fax - San Juan Office.....376-3548
- Fax - Lopez Office468-2470
- Island Network.....376-3528
- Operations - Area 1376-3527
- Operations - Area 2376-3562
- Operations - Area 3376-3544
- Tree Trimming (Right-of-Way).....376-3533
- Outages during business hours.....376-3500
- Outages after business hours.....376-3599
- Technical Services376-3536

SJC Dept. of Public Works370-0500

Washington State Dept. of Labor & Industries

- Electrical Inspection Request Line416-3005
- Electrical Inspection Fax Line416-3045

OPALCO SERVICE AREAS

Area 1 – (376-3500) Orcas, Big Double, Little Double and Fawn Islands

Area 2 – (376-3550) San Juan, Henry, Pearl, Brown and Spieden Islands

Area 3 – (376-3544) Lopez, Shaw, Blakely, Center, Decatur, Obstruction, Armitage, Crane, Canoe, Charles and Bell Islands

www.opalco.com